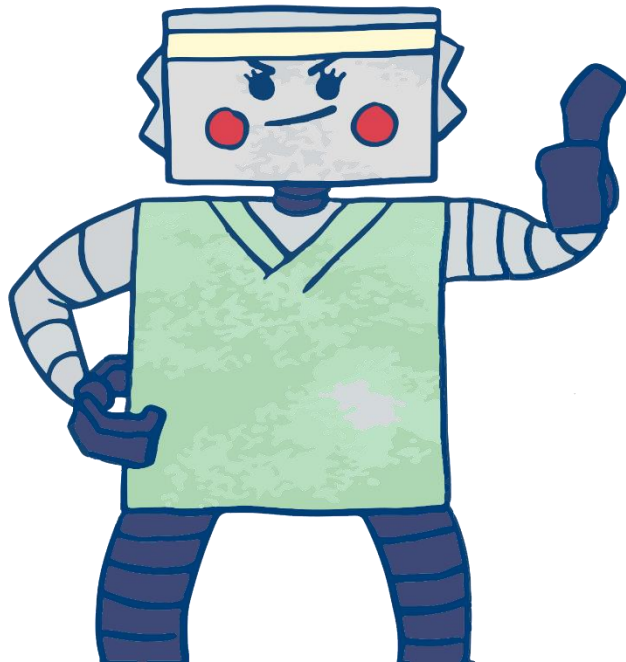


**29<sup>th</sup> NATIONAL JAPAN BOWL®  
REGISTRATION GUIDE**

**DIGITAL**  
**J★PAN B●OWL**



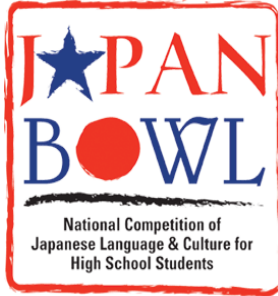
**The National Japan Bowl will take  
place online on Hopin**

---

**THE JAPAN-AMERICA SOCIETY  
OF WASHINGTON DC**

**1819 L Street NW, Suite 410 Washington DC 20036  
Email: [japanbowl@jaswdc.org](mailto:japanbowl@jaswdc.org) / Tel: 202-833-2210**

Japan Bowl Registration Guide © 2020 by The Japan-America Society of Washington, Inc.  
Japan Bowl® is a registered trademark of the Japan-America Society of Washington, Inc.  
The Japan Bowl name and logo may be used only with the Society's permission.



©

*Kanji-kun is the official mascot of the National Japan Bowl. "Uki uki" (うきうき) means to have a happy buoyant or floating feeling, and to be excited about something.*

Any inquiries regarding the National Japan Bowl should be submitted in writing to [japanbowl@jaswdc.org](mailto:japanbowl@jaswdc.org). The Director of the 2021 National Japan Bowl is Nancy Marsden ([nmarsden@jaswdc.org](mailto:nmarsden@jaswdc.org)).

*The Japan Bowl® name is an official trademark and is registered with the US Patent and Trademark Office. The Japan Bowl Study Guide, logo, the design of the official mascot "Kanji-kun," and all questions used in the competition are protected by US copyright law. Permission to use the Japan Bowl name or logo, and to use or adapt the Study Guide or Japan Bowl questions must be obtained from The Japan-America Society of Washington, Inc.*

# TABLE OF CONTENTS

## **1.0 Participating in the National Japan Bowl - Who is Eligible?**

- 1.1 Levels
- 1.2 Forming a Team
- 1.3 Student Eligibility Rules
- 1.4 Chaperones
- 1.5 Official Student Observers
- 1.6 Friends and Family Members

## **2.0 Applying to the National Japan Bowl**

- 2.1 How to Apply to the National Japan Bowl
- 2.2 Team Approval and Registration Confirmation
- 2.3 Substitution of Students after Team Approval
- 2.4 Substitution of Chaperones after Team Approval

## **3.0 Rules of Conduct**

- 3.1 Digital Japan Bowl Honesty Pledge
- 5.2 Grounds for Dismissal

## **4.0 2020 National Japan Bowl Schedule (Tentative)**

# Planning for the 2021 National Japan Bowl

## A Quick Guide

### Important Dates and Deadlines

Friday, December 18, 2020	Deadline for Early Registration*
Friday, January 15, 2021	Deadline for Receipt of All Applications
Friday, January 22, 2021	Responses to JASWDC questions are due
Friday, January 29, 2021	Notification of Approval by JASWDC
Friday, February 12, 2021	Deadline for Student Observer Applications
Friday, February 12, 2021	Deadline for Submitting Friends & Family Forms
Monday, February 22, 2021	Tech tests with schools will begin
Friday, March 19, 2021	Deadline for Chaperone and Student Substitutions
Thursday/Friday April 8-9, 2021	National Japan Bowl Competition

*\* If a team applies before the early bird registration date of December 18, 2020, the \$65 fee for ONE teacher per school (but not for a non-teacher chaperone) will be waived. Input the coupon code "CHAPERONE65" to apply the discount.*

### Participation Prices

#### Participation fees:

Participation fees are as follows:

- Student registration fee - \$65 (per person)
- Chaperone registration fee - \$65 (per person)
- Observer registration fee - \$65 (per person)
- Friends/family registration fee - \$65 (per person)
- Team registration fee - \$65 (per team)

**Since the competition will be held online, there will be no additional costs to participate (such as lodging and meals).**

## 1.0 Participation in the Japan Bowl - Who is Eligible?

The National Japan Bowl is open to full-time students who are currently enrolled in Levels II, III, and IV Japanese language classes at a high school in the United States, whether in regular or block schedule classes.

The national championship teams from Mexico and Canada also may join the National Japan Bowl, provided they meet the same eligibility criteria as US teams and students.

### 1.1 Levels

The three levels at the National Japan Bowl are:

Level II	Students enrolled in second year high school-level Japanese language study
Level III	Students enrolled in third year high school-level Japanese language study
Level IV	Students enrolled in fourth year high school-level Japanese language study or in AP Japanese

These levels are based on the course level, and not the number of years that a student has studied Japanese in high school. For example, a high school sophomore who began Japanese language study in elementary or junior high school might be studying with high school seniors in Level IV and therefore would be eligible for the Level IV team. However, that student could not participate as a member of a Level II or Level III team, because that is below his/her current level of study. The student's teacher must certify that the student is competing at the proper level.

### 1.2 Forming a Team

- a. Each school may send only one team per level to the National Japan Bowl. Local and global Japan Bowls may set their own limits for the number of teams per level, per school.
- b. All team members must be studying Japanese formally at the same high school for academic credit, and not as an extracurricular activity.

If Japanese is not offered at a student's high school but a city or county school district offers Japanese classes for academic credit in which students from multiple schools enroll together, whether online or in person, the school district and teacher may form teams to compete in the National Japan Bowl. In such cases, JASWDC will ask for additional information about the program, and a final decision on eligibility will be made by the Japan Bowl Director and Chair of the Japan Bowl Committee.

c. A team must have two or three students. One student is not a team. JASWDC strongly encourages schools to form a team of three students instead of two.

*A Japanese kotowaza says, "Sannin yoreba, Monju no chie / Three people together have the wisdom of Monju." It is the Japanese equivalent of "Two heads are better than one." Monju (or Monju-Bosatsu) is the Japanese Buddhist saint of wisdom, learning, and enlightenment.*

### 1.3 Student Eligibility

**In addition to team eligibility, each member of the team must meet certain requirements. The following rules about Japanese language education and experience govern the eligibility of each team member:**

a. Students who are native speakers of Japanese or who use Japanese at home are not eligible to compete.

b. Students who have had significant exposure to Japanese language and/or culture outside the high school curriculum are not eligible to compete. The determination whether a student's outside exposure is significant will be made on a case-by-case basis, according to the information the student and teacher provide.

*For example, students who have spent a cumulative total of three months or more in Japan for language study or a home-stay, including with relatives, might not be eligible to compete. The eligibility of students who have lived in Japan on US military bases or who have studied at international schools in Japan will be determined on a case-by-case basis, based on each student's circumstances.*

c. Participation is permitted at a level higher than the student's current high school level of Japanese study, but is not permitted at any level lower than his/her current level.

d. If a student participates in the Japan Bowl at a level higher than the one at which he/she is currently enrolled, that student will not be eligible to compete in a future Japan Bowl at the same or a lower level.

e. Students taking the AP Japanese course are eligible to compete at Level IV.

f. As noted in Section 2.1, the student's teacher must certify that the student is competing at the proper level and that the information on the student's registrations is correct to the best of his/her knowledge.

### 1.4 Chaperones

a. **There must be at least one adult chaperone per school who is 21 years of age or older.** Usually the students' Japanese language teacher serves as the chaperone, but there is no requirement that the chaperone should be the teacher. Chaperones are required to register, using the online form that will be provided.

- b. Each team may have its own chaperone, or one adult may be the chaperone for all teams from the same school.
- c. Chaperones are responsible for the well-being of her/his student(s) throughout the time of the competition. They must be present with the students on the Hopin platform throughout the duration of the Japan Bowl.
- d. Chaperones should read the terms of the Chaperone Agreement and then sign it.
- e. If a chaperone is not present at registration or if any of the rules about chaperones are not followed, the team will not be able to participate in the competition.

## 1.5 Official Student Observers

- a. **Any high school student who is learning Japanese is invited to join the competition as an official student observer**, provided space is available. It does not matter whether their school has sent an official team.
- b. Official student observers are welcome to join other students on the Hopin platform, participate in cultural activities, and receive the official National Japan Bowl T-shirt, provided they submit the Official Student Observer registration form and a \$65 fee per person. Both the form and payment must be received by February 12, 2021. All official student observers will receive a goodie bag mailed from the National Japan Bowl.

## 1.6 About Friends and Family Members

- a. **Family members and friends are invited to join the students at the National Japan Bowl.** Family members and friends who wish to observe the National Japan Bowl must submit a Friends and Family registration form, which is due February 12, 2021.
- b. Friends and family members also are welcome to join the Hopin platform, participate in cultural activities, and receive the official National Japan Bowl T-shirt, provided they submit a \$65 fee per person, together with the "Friends and Family" registration form. Both the form and payment must be received by February 12, 2021. All friends and family members will receive a goodie bag mailed from the National Japan Bowl.

## 2.0 Applying to the National Japan Bowl

### 2.1 How to Apply to the National Japan Bowl

Registration for the National Japan Bowl is handled digitally using Active Network. All forms, documents, and payments will be processed on this platform. No physical documents will need to be mailed to the JASWDC office.

If you have any questions about how to register, please do not hesitate to contact us at (202)833-2210 or [japanbowl@jaswdc.org](mailto:japanbowl@jaswdc.org) so we can assist you with your registration.

## Step 1 - Submit Team Applications

1. The registration link can be found from the Japan Bowl website under “join the 29<sup>th</sup> National Japan Bowl” at <http://www.japanbowl.org/join-the-29th-national-japan-bowl/>
2. To begin the process, the Teacher/Advisor for each team should register themselves and the levels from their school on Active. Teachers who will be chaperoning the students will need to select “chaperone registration.” If you are a language teacher who will not be chaperoning your school’s team, you can register just the levels of your school’s team and have the chaperone fill out the chaperone registration themselves.
3. An account will be created linked to your email address. This will allow you to log in and look up your information later. Your name, date of birth, and gender will also be asked.
4. Participants & Options will ask you to select the person you are registering. Please select your name for the level registration sessions you have selected (a message will pop up that you have selected multiple sessions at the same time, which you can ignore).
5. In the case that you will be using school funding or grant funding to pay for students’ registration fees, under “Session options” please check the box for “Team registration for schools who are paying for student registration fee,” and select the number of students that you will be paying for on that team. Each level of team registration will have this option, so please indicate the number of students you are paying for on their respective team level registrations.
6. Based on the sessions you have selected you will be asked different mandatory questions. After entering the information, check the boxes that you agree to the Active Agreement and Waiver. Sign your name digitally by either writing or typing in your name.
7. Confirm your registration details on the “Review cart & check out” page. Teachers registering before the early bird deadline of December 18th, 2020 can use the coupon code “CHAPERONE65” and the fee for the chaperone will be discounted. This coupon only applies to the language teacher from the school. Only one chaperone fee is waived per school for the early bird. For payment options, you can either pay immediately during registration or at a later date. If you will pay later, please select “enroll in payment plan.” Payment must be received before January 15th, 2021.
8. Create a password for your account. You can log in using your email address and account to view your sessions and make any necessary changes.

## Step 2 - Submit Individual Applications

1. Student competitors, chaperones, student observers, and friends/family should then go individually to <http://www.japanbowl.org/join-the-29th-national-japan-bowl/> and register



themselves. **Students should select “student registration” and not registration for the level in which they are competing.**

2. Students and student observers under the age of 18 must fill out their registration form with their parent or legal guardian. If you and your parent/legal guardian do not have access to the internet, please contact JASWDC at (202)833-2210 so that we can assist you in registering.
3. Students whose schools are using school funding or grants to pay for their registration fees should select “Price for students whose school are paying for them” before clicking “Add.” Students whose parents will be paying for them should select “Price for parents who are paying for child.”
4. Students will fill out their portion of the form. Parents must fill in and sign the primary parent/guardian section. Additional parents/guardians may also be added.
5. For payment options, you can either pay immediately during registration or at a later date. If you will pay later, please select “enroll in payment plan.” Payment must be received before January 15th, 2021.
6. Create a password for your account. You can log in using your email address and account to view your sessions and make any necessary changes.

### **Step 3 - Pay Fees**

1. Each student, chaperone, observer, and applying team needs to pay registration fees, as follows:
  - Student registration fee - \$65 (per person)
  - Chaperone registration fee - \$65 (per person)
  - Observer registration fee - \$65 (per person)
  - Friends/family registration fee - \$65 (per person)
  - Team registration fee - \$65 (per team)
2. For payment options, you can either pay immediately (“pay in full”) during registration or at a later date. If you will pay later, please select “enroll in payment plan,” select “Deposit +1 Payment(s)” under “Choose payment plan,” and then “Pay balance manually” under “Select billing option.” By selecting these options, you will not have to enter any credit card information when registering, and can pay it at a later time. However, please remember that **payment must be received before January 15th, 2021.**
3. If you are only able to pay by check or are unable to pay by credit card, please contact JASWDC at (202)-833-2210 or [japanbowl@jaswdc.org](mailto:japanbowl@jaswdc.org) in order to discuss an alternative payment method.

### **Step 4 - Sign and Assemble Required Documents**

The following additional supplemental forms must be submitted after the initial registration is processed:

1. Students and student observers must have their parent/guardian sign and submit the parent guardian consent form.
2. Students/student observers must also submit the participation form, which includes the signatures of their teachers and parent/guardian.
3. Students must submit the Digital Japan Bowl Honesty Pledge.
4. Teachers and chaperones must submit the chaperone consent form.
5. All these forms can be submitted digitally through Active. Please contact JASWDC if you are unable to upload the forms digitally.

## **2.2 Team Approval and Registration Confirmation**

- a. After receipt, JASWDC will screen all online applications to determine each applicant's eligibility and ensure that all team forms are complete. If there are any questions concerning a student's eligibility, JASWDC will contact the Teacher/Advisor.
- b. JASWDC will send an email to any teacher whose team or student applications are in question. All responses to JASWDC questions must be made in writing through email before Friday, January 22, 2021.
- c. JASWDC will accept all qualified teams, provided space is still available in the competition rooms. Teams will be accepted in the order that they submitted their fully-completed application, until the competition room seating limits are reached at each level.
- d. After screening is completed and any questions have been answered, JASWDC will notify teachers by email to confirm their team and student registrations. Information on how to register to Hopin will also be sent, and a tech test with each school will be scheduled.
- e. Tech tests will take place with each school starting February 22. The tech tests will allow participants to familiarize themselves with the Hopin platform and digital competition format of the preliminary round and confirm that their microphones, video, headsets, etc., are working.

## **2.3 Substitution of Students after Team Approval**

- a. After teams have been notified of their acceptance and registration, substitutions will be permitted only if a student becomes ill or there is some other valid reason.
- b. All substitutes must meet the same eligibility requirements. Therefore, the required application forms for the proposed substitute must be submitted to the JASWDC for review.
- c. The JASWDC decision whether to accept a substitute is final. If a substitution is not permitted, the team may compete with two students - but not with just one.
- d. If a student withdraws and is not replaced, JASWDC will refund the \$65 student registration fee upon request.
- e. The JASWDC will not consider applications for student substitutions after Friday, March 19<sup>th</sup>, 2021, except in extreme circumstances.

## **2.4 Substitution of Chaperone(s) after Team Approval**

- a. If the team's designated chaperone changes, a new Chaperone Agreement, signed by the new chaperone, and new Chaperone Consent Forms, signed by the parent/guardian of each student, must be submitted.
- b. The deadline for chaperone substitutions is Friday, March 19, 2021.

## **3.0 Rules of Conduct**

### **3.1 Digital Japan Bowl Honesty Pledge**

The Japan-America Society of Washington DC is committed to ensuring that the 2021 National Japan Bowl is a fair competition where students can showcase their hard work and knowledge of Japan and the Japanese language. This year, as every year, students, observers, instructors, and all other participants are required to abide by the rules and regulations set out by JASWDC in order to protect the quality and integrity of the competition.

In light of the digital format, all participants are required to sign and adhere to the word and spirit of this honesty pledge in order to compete.

- Adhere to all rules and guidelines as laid out in the “Digital Japan Bowl Competition Guide” document made available to all participants.
- Only confer with the registered members of your three-person team within your school and competition level, and avoid all inappropriate collaboration with other students, instructors, observers, or other individuals for the duration of the testing period.
- Refrain from the use of any aids including but not limited to textbooks, study guides, handwritten notes, online resources, cell phones (except during the Championship Round when explicitly allowed to by the NJB judges), or any other form of assistance.
- Follow the directions of NJB judges and proctors as pertains to the competition and direct any questions or concerns to NJB judges, proctors, or JASWDC staff as appropriate.
- Not use any device, program, or app to copy, screenshot, record, or film any part of the preliminary round competition.
- Trust that your fellow competitors are adhering to the same code of ethics and honesty.
- Report to NJB and JASWDC staff immediately any violation of these rules of which you become aware.

### **3.2 Grounds for Disqualification**

**Following are the possible grounds for the disqualification of a student or team from the competition. JASWDC has the sole right to determine, in its own judgment, whether any action requires disqualification.**

- a. Challenging or showing lack of respect to National Japan Bowl officials, staff, or volunteers by a student, teacher, or chaperone
- b. Behavior violating of the Digital Japan Bowl Honesty Pledge
- c. Use of offensive language
- d. Misrepresentations and/or other irregularities on an application form which become apparent at the time of registration or during the competition.
- e. Violation of the National Japan Bowl rules about photographic equipment and electronic devices, including watches, that are capable of recording, photographing, or transmitting.
- f. Making the questions or answers known to others via any kind of communications network, including email and social media.

Depending on the severity of the infringement, the JASWDC may prohibit the student(s) and possibly the entire team or school from participating in the National Japan Bowl at any Level in the following year. We therefore ask students, parents/guardians, and teachers to encourage appropriate behavior, in order to ensure that there are no misunderstandings.

#### **4.0 2020 National Japan Bowl Schedule (Tentative)**

**The following schedule is tentative and subject to change. The final schedule will be sent to all teams after their registrations are complete.**

**NOTE: All times are in Eastern Time (EDT)**

##### ***Thursday, April 8***

11:45	Hopin opens
12:00-12:20 pm EDT	Opening remarks
12:30-2:10 pm EDT	Level 2 Preliminary Round and Answer Review (Level 2 Zoom Meeting Room)
2:10-4:20 pm EDT	Level 3 Preliminary Round and Answer Review (Level 3 Zoom Meeting Room)
3:50-5:50 pm EDT	Level 4 Preliminary Round and Answer Review (Level 4 Zoom Meeting Room)
12:30-5:30 pm EDT	Conversation Round for students not in their preliminary rounds
12:30-5:50 pm EDT	Booths, Raffle quizzes, cultural demonstrations, and other activities
6:00-6:30 pm EDT	Onigiri Workshop and Dinner Break
6:30-7:00 pm EDT	Networking Time

6:30-7:30 pm EDT Teacher networking event  
6:30-8:30/9 pm EDT Live Expo Booths with representatives (US and Japan)  
8:00-9:00 pm EDT Exchange with Japanese students America-Japan Society students

***Friday, April 9***

11:45 Hopin opens  
12:00-12:10 pm EDT Announcements  
12:15-2:15 pm EDT Level 2 Preliminary Round and Answer Review (Level 2 Zoom Meeting Room)  
1:55-3:55 pm EDT Level 3 Preliminary Round and Answer Review (Level 3 Zoom Meeting Room)  
3:30-5:30 pm EDT Level 4 Preliminary Round and Answer Review (Level 4 Zoom Meeting Room)  
12:30-5:30 pm EDT University presentations, Raffle quizzes, cultural demonstrations, and other activities (5-6 different workshops)  
1:30, 3:05, and 5:10 Kahoot Raffle Quizzes  
5:30-6:00 pm EDT Dinner Break  
6:00-6:30 pm EDT Announcement of Finalists, video message from Princess Takamado  
6:30-8:40 pm EDT Championship Rounds  
Level II (6:30~7:10)  
Level III (7:15~7:55)  
Level IV (8:00~8:40)  
8:40 -9:00 pm EDT Awards and Closing Ceremony